

Economic Snapshot of St. Mary's County, MD

Provided by the St. Mary's County
Department of Economic Development



Location

- Located on the Southern Maryland peninsula
- Less than 2 hour drive from major metro areas
 - Washington D.C.
 - Baltimore, MD
 - Richmond, VA
- Ready access to federal government and agencies and cultural and social amenities in D.C.
- Maryland is within an overnight drive of a 1/3 of the U.S. population
- Over 500 miles of shoreline



Major Employers

Employer	Employment
U.S. Navy	11,725
MedStar St. Mary's Hospital	1,200
DynCorp International	985
Wyle	910
BAE Systems	580
St. Mary's College of MD.	460
HMR of Maryland - Charlotte Hall	440
Booz Allen Hamilton	400
PAE Applied Technologies	395
Northrop Grumman	380
General Dynamics	350
J.F. Taylor	335
Lockheed Martin	315
Boeing	280
McKay's Food and Drug	275



A High-Tech Workforce

- **4th best** place in the country for tech jobs (Nerdwallet)
- **5th highest** concentration of high-tech workers in the country-higher than D.C., Seattle, Detroit, and San Francisco (SelectUSA)
- **More aerospace engineers** per capita than anywhere else in the county (Bureau of Labor Statistics)
- **3.5% above** the national average for STEM Employment (Forbes)

Occupation	Number	Location Quotient
Aerospace Engineers	1030	49.14
Electrical Engineers	380	6.54
Computer Hardware Engineers	450	20.94
Mechanical Engineers	510	5.49
Computer Programmers	130	1.65
Computer and Information Research Scientist	310	34.68

Naval Air Station (NAS) Patuxent River

About NAS Pax River

- Premier installation in the country for naval aviation research, development, testing, and evaluation.
- 14,500 acre facility with five runways totaling 11,800 feet and over 300 laboratories
- Over 5,000 sq. miles of restricted airspace and 4,000 miles of unrestricted airspace
- Fully instrumented and integrated test ranges as part of the 2,700 sq miles Atlantic Test Range.

Economic Impact:

- Supports over 36,956 jobs to the Maryland State Economy
- Contributes \$7.5 billion in output to the Maryland State Economy
- Supports \$2.4 billion in wages on an annual basis to the Maryland State Economy



NAS Patuxent River Platforms & Programs

Current Programs

- F-35 Lightning II Joint Strike Fighter
- E-2D Advanced Hawkeye
- E-2C Hawkeye
- C-2A Greyhound
- F/A - 18 & EA -18G
- MV-22B Osprey
- AV-8B Harrier II
- EA-6B Prowler
- E-6B Mercury
- T-6 A/B Texan II
- T-34C Turbometer
- T-44 Pegasus
- T-39 Saberliner
- TH-57 Sea Ranger
- T-45A/C Goshawk
- Precise Strike Weapons
- Air to Ground Missiles
- Air-to-Air Missiles
- Joint Precision Approach and Landing System (JPALS)
- Next Generation Jammer

Aircraft Launch and Recovery Equipment (ALRE)

- Launching Systems
- Recovery Systems
- Information Systems
- Visual Landing Aids (VLA)
- Expeditionary Airfields (EAF)
- Electromagnetic Aircraft Launch System (EMALS)
- Advanced Arresting Gear (AAG)

Unmanned Air Systems

- MQ-4C Triton
- MQ-8B Fire Scout
- MQ-8C Fire Scout
- MQ-25
- Small Tactical Unmanned Systems
- X-47B Unmanned Combat Air System (Unmanned Combat Aerial Vehicle - Demonstration)

Rotocraft

- CH-53D Sea Stallion
- CH-53E Super Stallion
- CH-53K King Stallion
- MH-53E Sea Dragon
- HH-60H
- MH-60R Seahawk
- MH-60S Seahawk
- SH-60B

- SH-60F
- Presidential Helicopters

Tactical Airlift, Adversary & Support Aircraft Program Systems

- C-9B Skytrain II
- UC-12B/F/M Huron
- C-20A/D Gulfstream
- RC/EC/C-26D
- C-37A Gulfstream V, C-37B Gulfstream 550
- C-40A Clipper
- C/KC-130T Hercules, KC-130J Super Hercules
- F-5N Adversary
- F-16A Fighting Falcon
- UC-35C Huron

Air Anti-Submarine Warfare Systems

- Sonobuoys
- Multi-Static Active Coherent (MAC)
- High Altitude Anti-Submarine Warfare (HAASW)
- Airborne ASW Intelligence (AAI)

NAS Patuxent River Employment

- Employment Levels for PAX River and local employment makeup

Need for Economic Diversification

- 70-80% of St. Mary's economy is directly tied to NAS PAX River
- Sequestration in 2013
 - 20% reduction in spending across all federal departments
 - Civil Servants furloughed
 - Pax River closed
 - Hotels saw revenue losses of 25-30%
- Commissioners committed to diversifying the economy of St. Mary's County
- Developed the *Strategic Plan to Build an Innovation Driven Economy*



Washington (Nov. 7, 2013) Chief of Naval Operations (CNO) Adm. Johnathon Greenert, right, testifies before the Senate Armed Services Committee on the impact of sequestration on national defense. (U.S. Navy photo by Chief Mass Communication Specialist Peter D. Lawlor/Released).

A Strategic Plan for an Innovation-Driven Economy

4-Pronged Approach:

1. Attract and retain a young, talented, and diverse workforce
2. Create a nurturing environment for innovation and entrepreneurship
3. Grow emerging and heritage industries
4. Support and advance the mission of Naval Air Station (NAS) Patuxent River and its tenant commands



Attract and Retain a Young Workforce

- Millennials will make up 75% of workforce in 2030
- Important for the growth of an innovation-drive economy to attract and retain a young talented workforce
- Local Companies have expressed their most significant current need is workforce
- Strategies include:
 - Work with the Town of Leonardtown to a walkable and historic retail and entertainment district that draws residents and tourists
 - Recognize Lexington Park and the Town of Leonardtown as urban areas that attract younger residents seeking connections and cultural experiences.
 - Expand the variety of housing for a young workforce to include more affordable options
 - Promote the areas unique ability to provide high-wage jobs in a beautiful rural and coastal setting.



Create a nurturing environment for innovation and entrepreneurship

- Attracting and Growing start-ups and technology companies in St. Mary's County will assist in the growth of a tech-driven, diversified workforce
- Potential startups can emerge out of Navy and workforce located in St. Mary's
- Startup Businesses can receive support at the new Techport @ the Airport Business Incubator
- Startups can learn and network with the Southern Maryland Innovation and Technology Initiative (SMIT)
- Startups can pitch their businesses at the Annual Crab Pot Pitch Competition
- New Companies can receive assistance from resource providers such as the Small Business Development Center and the Maryland Technology Economic Development Corporation (TEDCO)



A Strategic Plan for an Innovation-Driven Economy

Targeted Growth Industries



Aviation and
Aircraft
Modification



Advanced
Manufacturing



Unmanned
and
Autonomous
Systems



Agriculture and
Aquaculture



Tourism

Targeted Industries:

Advanced Manufacturing, Rapid Prototyping, and Aviation & Aircraft Modification

- Small but growing component of the St. Mary's economy.
- Large portion supports defense contractors, however there is commercial potential.
- Creates middle-class jobs
- Initiatives include:
 - Develop a robust aircraft modification and manufacturing ecosystem in conjunction with partners
 - Work with resource partners to attract, retain, and grow manufacturing businesses
 - Meet with and survey existing manufacturing businesses to establish needs
 - Establish Manufacturing Advisory Group



Targeted Industries:

Unmanned and Autonomous Systems

- NAS PAX River offers a World Class Research and Development Facility
- The University of Maryland UAS Test Site provides a first class facility and personnel to test UAS in a secure environment.
- A new 83,000 sq ft. University of Maryland System UAS Academic and Research Building is slated to be built at the Southern Maryland Higher Education Center in 2019
- St. Mary's offers a highly trained workforce, and ideal conditions for testing and flying UAS
- Over 20 UAS companies call St. Mary's County home



Targeted Industries:

Tourism

- Tourism and Hospitality Master Plan Developed as part of overall Strategic Plan
- Initiatives include:
 - Transition of Tourism Division into a nonprofit entity, Visit St. Mary's.
 - Tying accommodations tax to nonprofit funding.
 - Hospitality training for the tourism workforce.
 - Improve visitor experience with industry partners.
 - Addressing environmental regulations that thwart new development and redevelopment of tourism opportunity sites throughout St. Mary's.



Targeted Industries:

Tourism (continued)

Tourism's Economic Impact

- **2,365 people** employed directly and indirectly by the tourism industry in St. Mary's County in 2016.
- **\$84.7 million** in labor income directly and indirectly from St. Mary's Tourism in 2016.
- **\$23.3 million** in state and local taxes in 2016.
- **\$163.4 million** in tourism industry sales in 2016.

Targeted Industries:

Agriculture & Aquaculture

- Promotion of St. Mary's County Heritage Industries while preserving rural character
- Initiatives include:
 - Assist local farmers in marketing value-added products and create opportunities for the direct sale of local produce and specialty products
 - Support the growth of the oyster aquaculture industry
 - Establish a meat processing facility in Southern Maryland
 - Seek legislation to address regulations that undermine or constrain profitable agriculture and aquaculture in St. Mary's County
 - Research the establishment of a commercial kitchen in Southern Maryland
 - Involve St. Mary's technology community in the research and development of water purification systems to address the increasing need for fresh water to sustain local agriculture operations.



Support and advance mission of NAS PAX River

- The base is St. Mary's County's largest employer
- Initiatives include:
 - Collaborate with NAVAIR to assess and address skill demands
 - Coordinate and strategize with base officials regularly about infrastructure needs and shared services
 - Support NAVAIR's mission to increase fleet readiness
 - Continue to prioritize land preservation efforts that restrict development that could impact base operations



Support and advance mission of NAS PAX River Land Preservation

- Work with the Navy and other partners to place easements on agriculture, open space, and forested land to curb future development
- Preserves the rural landscape while protecting NAS PAX River from encroachment
- 23,591 acres were placed in land preservation in 2017.



Current Strategic Initiatives

- Airport Innovation District
- North County Farm Market
- Proposed Tax Incentives

Airport Innovation District

- St. Mary's County Regional Airport becoming the Technology Hub of the County
- Initiatives include:
 - Expansion of runway and infrastructure at the airport site
 - Innovation District planning
 - Support the development of new companies at the Airport
 - Support the growth of resources at the Airport
 - Expand the fiber network at the Airport



About the Department of Economic Development

- Works on behalf of all citizens and business to secure a sound resilient economy in St. Mary's County.
- Can provide:
 - site selection assistance
 - development ombudsmen services
 - data research and analytics
 - business consultations
 - connections to resource providers
 - financing resources and tax incentives
- Website: business.stmarysmd.com
- Email: DED@stmarysmd.com
- Phone: 301-475-4200 ext. *1400

The DED Team

Chris Kaselemis, AICP

Director

301-475-4200 ext. *1405

chris.kaselemis@stmarysmd.com

Bennett Wilson

Deputy Director

301-475-4200 ext. *1407

Bennett.wilson@stmarysmd.com

Dana Digregorio

Senior Administrative Coordinator

301-475-4200 ext. *1400

dana.digregorio@stmarysmd.com

Katherine Stormont

Economic Development Specialist

301-475-4200 ext. *1406

katherine.stormont@stmarysmd.com

Donna Sasscer

Agriculture and Seafood Division Manager

240-309-4021

donna.sasscer@stmarysmd.com

Lisa Ledman

Agriculture Administrative Coordinator

240-309-4021

dana.digregorio@stmarysmd.com

Sue Veith

Environmental Planner

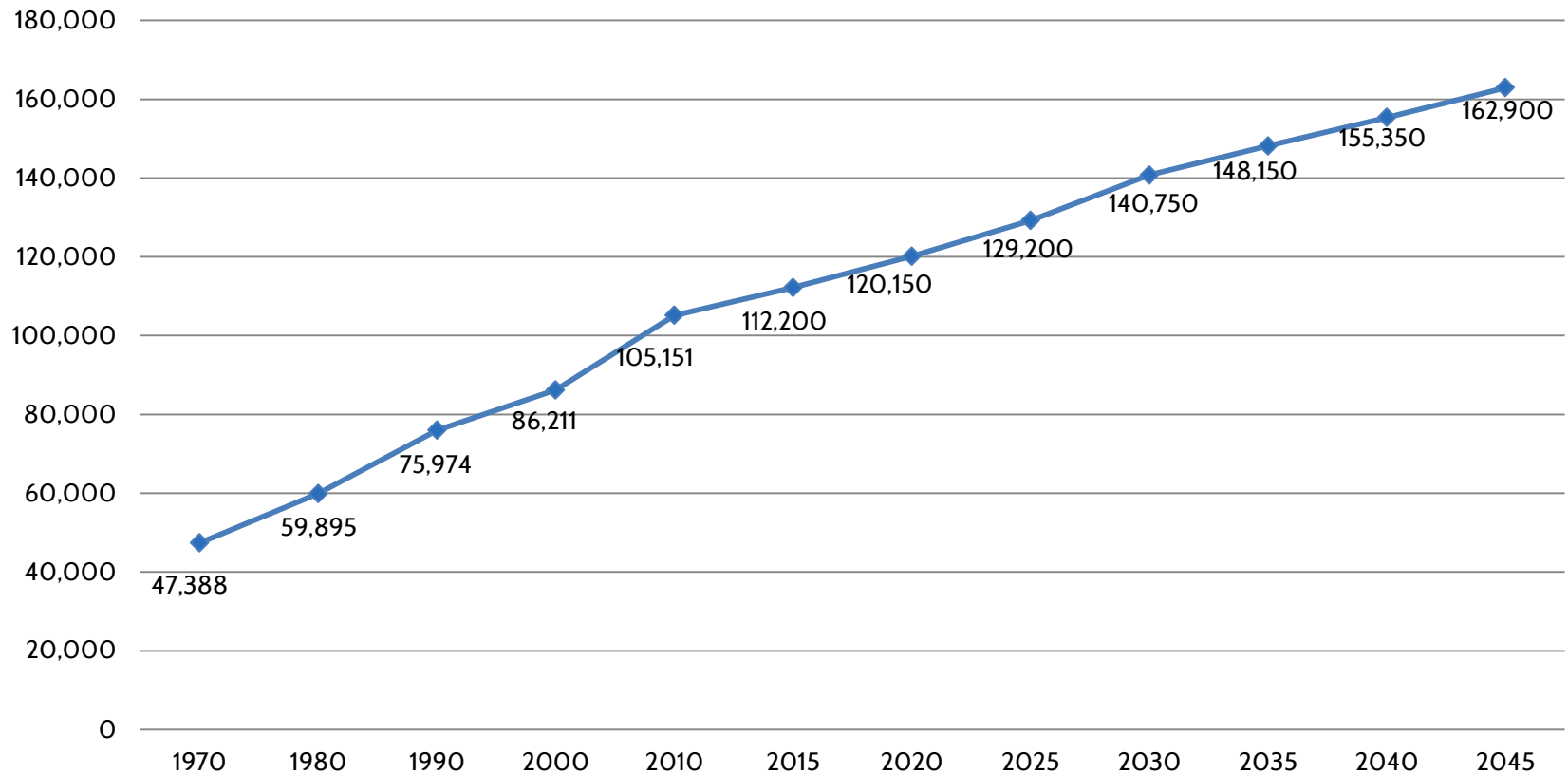
301-475-4200 ext. 1547

sue.veith@stmarysmd.com



Selected Economic Data

Population Growth and Projections



Population Characteristics:

Gender and Race

Total Population	110,675	100.0%
White	87,669	79.2%
Black or African American	15,568	14.1%
American Indian and Alaska Native	217	0.2%
Asian	2,964	2.7%
Native Hawaiian and Other Pacific Islander	31	0.0%
Some Other Race	616	0.6%
Two or More Races	3,610	3.3%

Total Population	110,675	100.0%
Male	55,176	49.9%
Female	55,499	50.1%

Total Population	110,675	100.0%
Hispanic or Latino	5,136	4.6%
Not Hispanic or Latino	105,539	95.4%

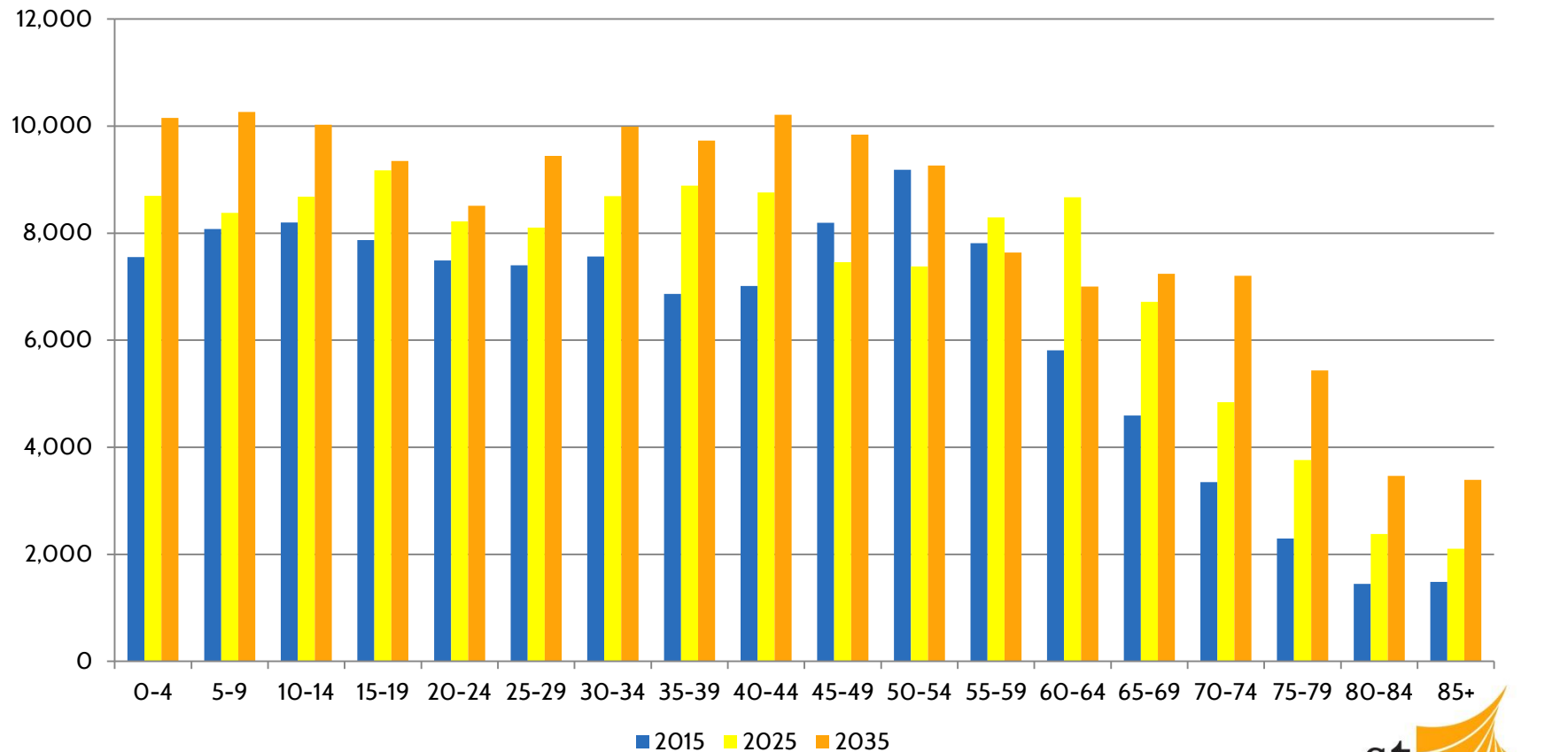
Population Characteristics:

Age Distribution

Total Population	110,675	100.0%
Under 5 years	7,222	6.5%
5 to 9 years	7,719	7.0%
10 to 14 years	7,930	7.2%
15 to 19 years	7,646	6.9%
20 to 24 years	7,651	6.9%
25 to 34 years	15,139	13.7%
35 to 44 years	14,146	12.8%
45 to 54 years	17,050	15.4%
55 to 59 years	7,548	6.8%
60 to 64 years	5,594	5.1%
65 to 74 years	7,824	7.1%
75 to 84 years	3,753	3.4%
85 Years and Older	1,453	1.3%



Projected Age Distribution



Source: Maryland Department of Planning

Educational Attainment Characteristics

Population 25 Years and Older	72,507	100.0%
Less than 9 th Grade	2,192	3.0%
9 th -12 th Grade	5,145	7.1%
High School Graduate (includes equivalency)	21,929	30.2%
Some College, No Degree	15,739	21.7%
Associate's Degree	5,821	8.0%
Bachelor's Degree	12,584	17.4%
Graduate or Professional Degree	9,097	12.5%



Educational Attainment Characteristics

Race and Hispanic or Latino Origin	High School Graduate or Higher	Bachelor's Degree or Higher
White Alone, not Hispanic or Latino	92.1%	32.0%
Black Alone	80.8%	13.4%
American Indian or Alaska Native Alone	89.3%	20.3%
Asian Alone	88.1%	55.4%
Native Hawaiian or Other Pacific Islander Alone	100.0%	100.0%
Some Other Race Alone	84.0%	28.5%
Two or more races	92.3%	23.5%
Hispanic or Latino Origin	77.3%	27.4%

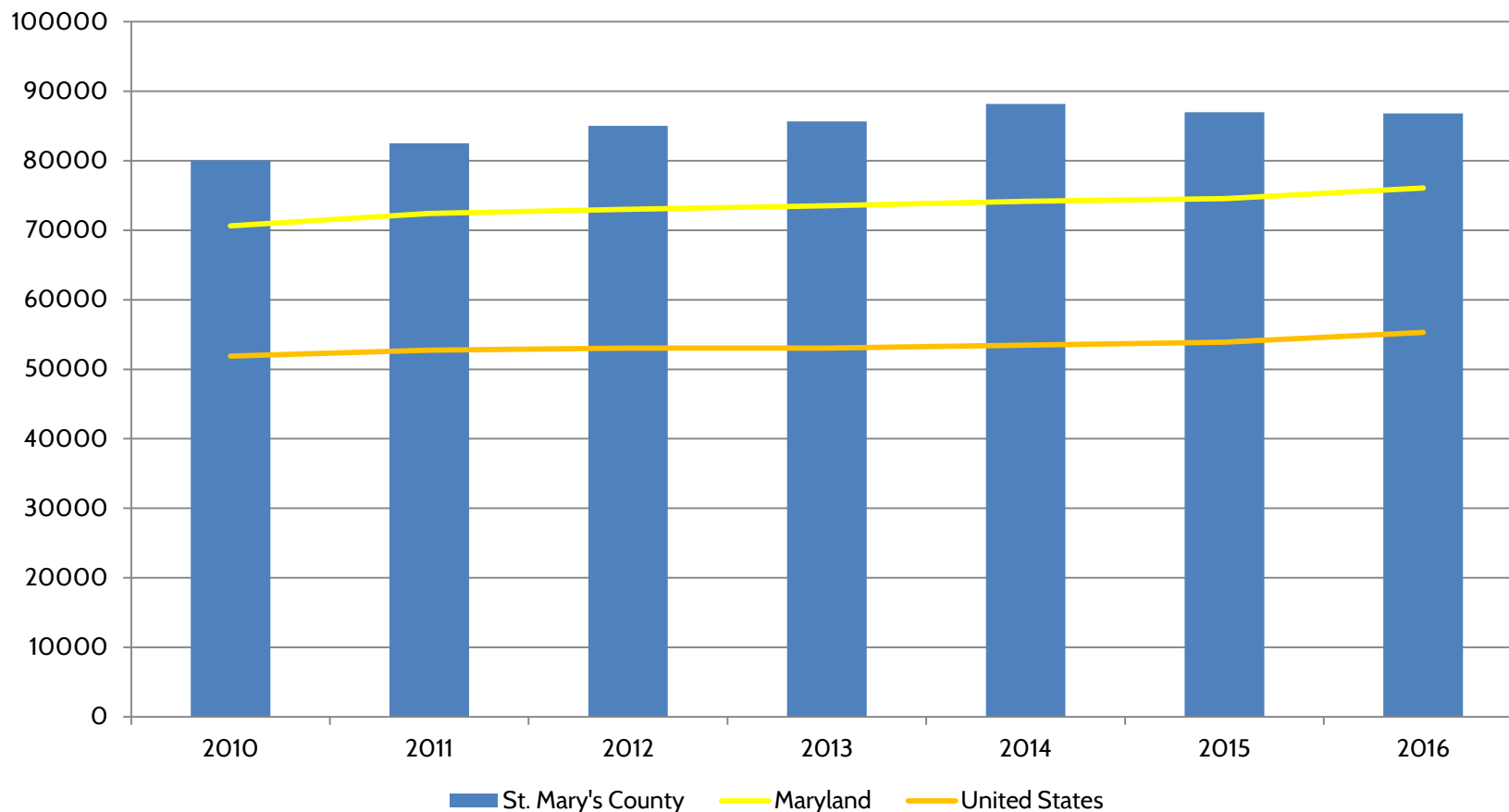


Median Household Income

Location	Median Household Income
St. Mary's County	\$86,810
Maryland	\$76,067
United States	\$55,322



Median Household Income Growth



Top Occupations by Location Quotient

Occupation	Employment Levels	Location Quotient
Aerospace Engineers	1030	49.14
Mathematicians	30	34.86
Computer and Information Research Scientists	310	34.68
Logisticians	1220	23.85
Electronics Engineers, Except Computer	930	21.66
Computer Hardware Engineers	450	20.94
Aircraft Mechanics and Service Technicians	850	20.23
Operations Research Analysts	620	18.29
Engineers, All Other	730	17.31
Electrical and Electronics Engineering Technicians	600	14.60

Note: Location Quotient is the measure of concentration of a specific occupation in a region's workforce compared to the concentration of that occupation nationally.



Average Weekly Wage by Industry

Total, All Industries	Establishments	Average Weekly Wage
Accommodation and Food Service	188	\$328
Administrative and Support and Waste Management	93	\$788
Agriculture, Forestry, Fishing, and Recreation	17	\$456
Arts, Entertainment, and Recreation	34	\$374
Construction	284	\$982
Educational Services	82	\$989
Finance and Insurance	75	\$1,028
Health Care and Social Assistance	215	\$908
Information	21	\$933



Average Weekly Wage by Industry

Industry	Establishments	Average Weekly Wage
Management of Companies and Enterprises	7	\$960
Manufacturing	34	\$1153
Mining, Quarrying, and Oil and Gas Extraction	2	Confidential
Other Services (except Public Administration)	161	\$563
Professional, Scientific, and Technical Services	359	\$1668
Public Administration	23	Confidential
Real Estate and Rental and Leasing	67	\$764
Retail Trade	310	\$498
Transportation and Warehousing	120	\$1486
Utilities	3	Confidential
Wholesale Trade	59	\$942



Unemployment Characteristics

Total Population	4.4%
White	4.1%
Black or African American	5.9%
American Indian and Alaska Native	9.5%
Asian	5.1%
Native Hawaiian and Other Pacific Islander	0.0%
Some Other Race	3.0%
Two or more races	5.8%

Total Population	4.4%
Male	3.5%
Female	4.1%

Total Population	4.4%
Hispanic or Latino	2.5%
Not Hispanic or Latino	4.2%

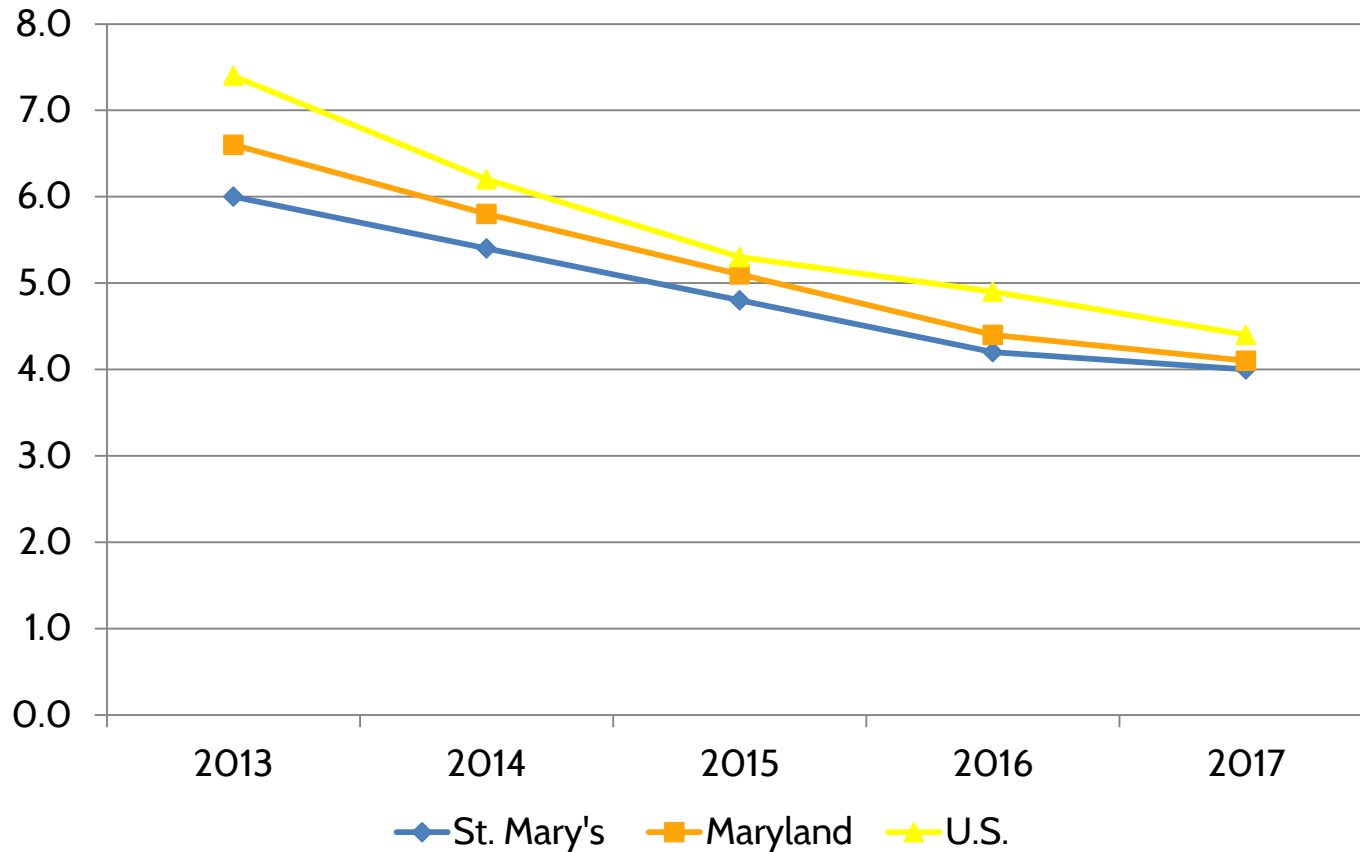


Unemployment Rate by Age

Total Population	4.4%
Under 5 years	20.8%
5 to 9 years	12.4%
10 to 14 years	5.6%
15 to 19 years	3.6%
20 to 24 years	1.9%
25 to 34 years	2.1%
35 to 44 years	2.0%
45 to 54 years	2.4%
55 to 59 years	3.5%
60 to 64 years	3.1%
65 to 74 years	20.8%
75 to 84 years	12.4%
85 Years and Older	5.6%



Unemployment Rate History

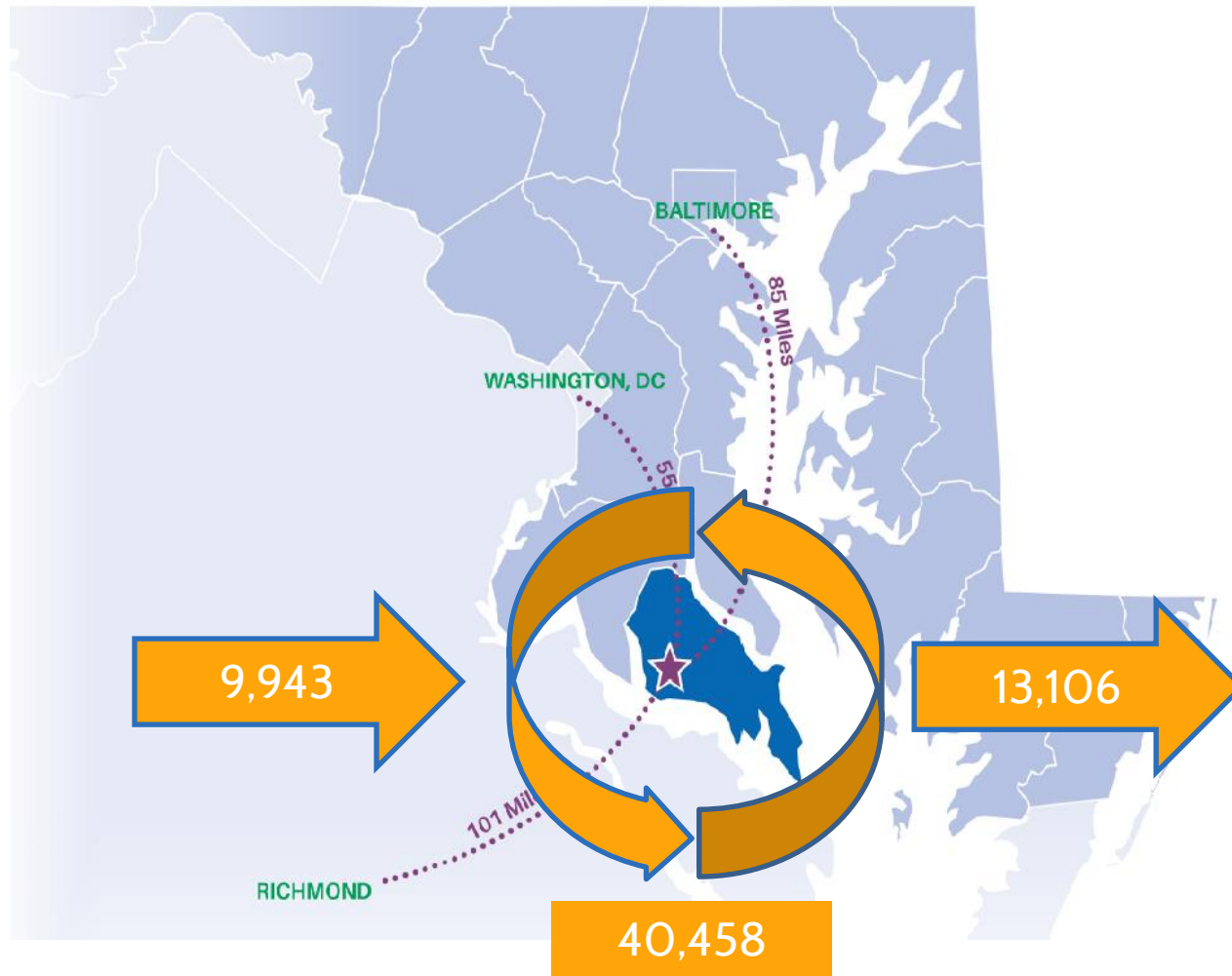


Commuting Patterns

Commuting Pattern	Estimate
Commuting Into St. Mary's	9,943
Commuting Out of St. Mary's	13,106
Net Commuting	-3163
Residents Who Work in St. Mary's	40,458
Percentage of Residents Who Work in St. Mary's County	75.5%
Percentage of St. Mary's Workers Who Live in St. Mary's County	80.3%
Percentage of St. Mary's Jobs Held by Non-Residents	19.7%



Commuting Patterns



Commuting Patterns:

Commuting INTO St. Mary's

Workers Residence	Number	Percentage
St. Mary's County	40,458	80.3%
Calvert County	5,012	9.9%
Charles County	2,436	4.8%
Prince George's County	477	0.9%
Montgomery County	212	0.4%
Anne Arundel County	197	0.4%
King George County	168	0.3%
Baltimore County	110	0.2%
Fairfax County	109	0.2%
Spotsylvania County	75	0.1%
Remainder of Counties	1,147	2.3%

Commuting OUT OF St. Mary's

Location	Count	Share
St. Mary's County , MD	40,458	75.53%
Charles County	3,537	6.60%
Prince George's County	2,659	4.96%
Calvert County	2,340	4.37%
Washington, D.C.	1,973	3.68%
Montgomery County	461	0.86%
Arlington County	447	0.83%
Anne Arundel County	425	0.79%
Fairfax County	325	0.61%
Alexandria City	174	0.32%
All Other Locations	568	1.06%



In and Out Migration: Age

Population 1 Year and Over	Total	Moved within the same country	Moved from different county, same state	Moved; from different state	Moved from abroad
1 to 4 Years	5,806	9.4%	6.6%	6.4%	1.1%
5 to 17 Years	20,361	7.3%	3.5%	4.5%	0.5%
18 to 24 Years	10,585	8.4%	5.3%	2.5%	0.3%
25 to 34 Years	15,139	11.5%	4.2%	8.1%	1.0%
35 to 44 Years	14,146	5.1%	2.5%	4.5%	1.1%
45 to 54 Years	17,050	5.0%	2.8%	1.4%	0.4%
55 to 64 Years	13,142	2.9%	2.5%	1.4%	0.0%
65 to 74 Years	7,824	1.1%	2.4%	0.5%	0.1%
75 Years and Older	5,206	1.9%	1.6%	0.9%	0.2%
Total	109,259	6.2%	3.4%	3.6%	0.5%
Median Age	36.8	27.0	26.8	28.3	28.6

In and Out Migration: Educational Attainment

Population 25 Years and Older	Total	Moved within the same country	Moved from different county, same state	Moved; from different state	Moved from abroad
Less than High School Graduate	7,337	11.5%	3.1%	3.4%	0.0%
High School Graduate (includes equivalency)	21,929	4.3%	2.6%	1.7%	0.3%
Some College or Associate's Degree	21,560	5.5%	3.5%	4.4%	0.8%
Bachelor's Degree	12,584	4.4%	3.1%	3.9%	0.9%
Graduate or Professional Degree	9,097	3.9%	1.6%	3.4%	0.5%

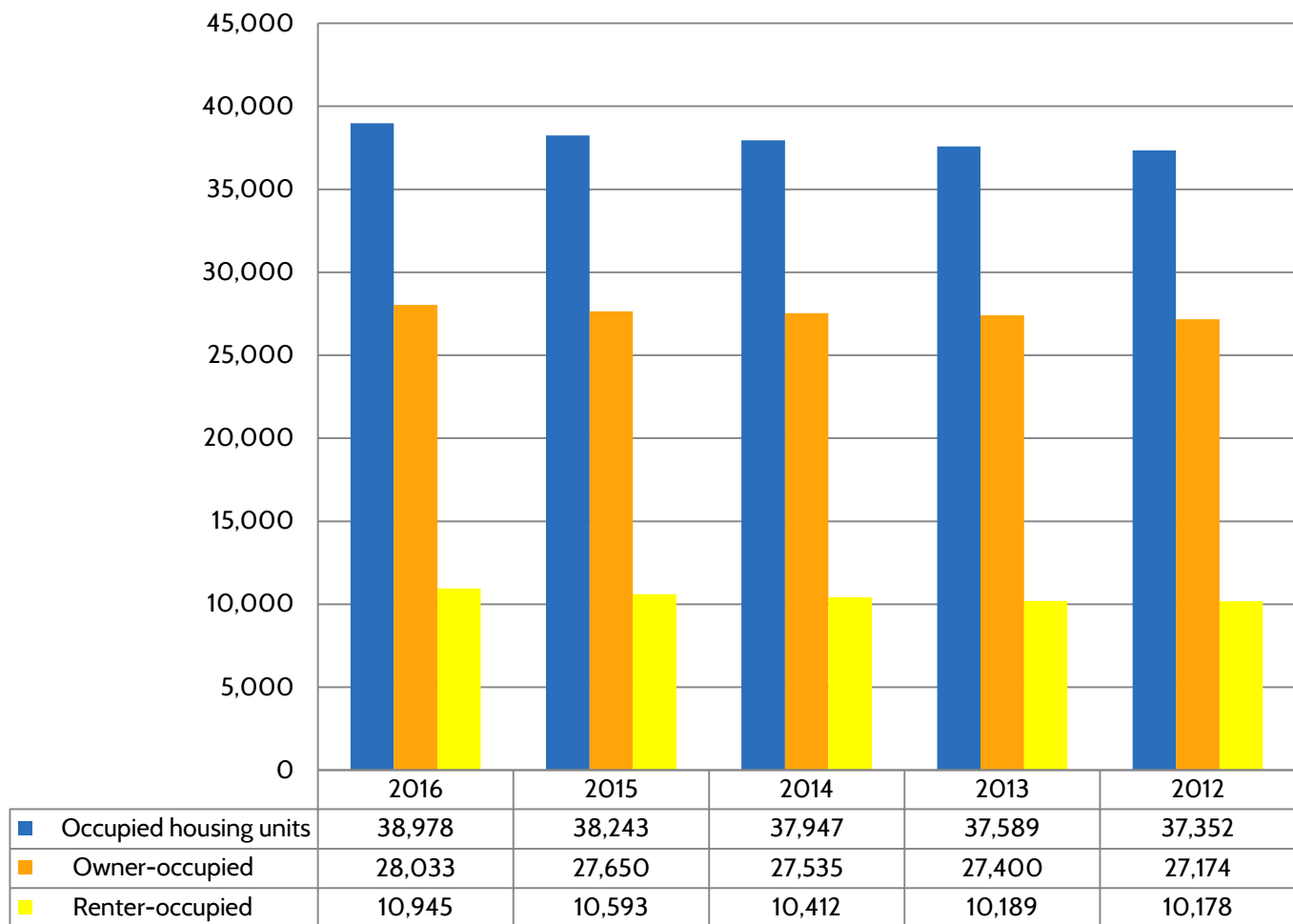
In and Out Migration: Race

Population 1 Year and Over	Total	Moved within the same country	Moved from different county, same state	Moved; from different state	Moved from abroad
White	86,607	5.1%	2.6%	3.4%	0.5%
Black or African-American	15,336	11.9%	6.0%	3.7%	0.5%
American Indian or Alaska Native	217	0.0%	0.0%	0.0%	0.0%
Asian	2,960	4.0%	4.9%	4.1%	2.9%
Native Hawaiian or Other Pacific Islander	31	0.0%	0.0%	0.0%	0.0%
Some Other Race	585	14.4%	17.3%	3.4%	0.0%
Two or More Races	3,523	11.3%	8.8%	6.7%	0.3%
Hispanic or Latino Origin	5,057	2.9%	2.5%	13.1%	0.9%

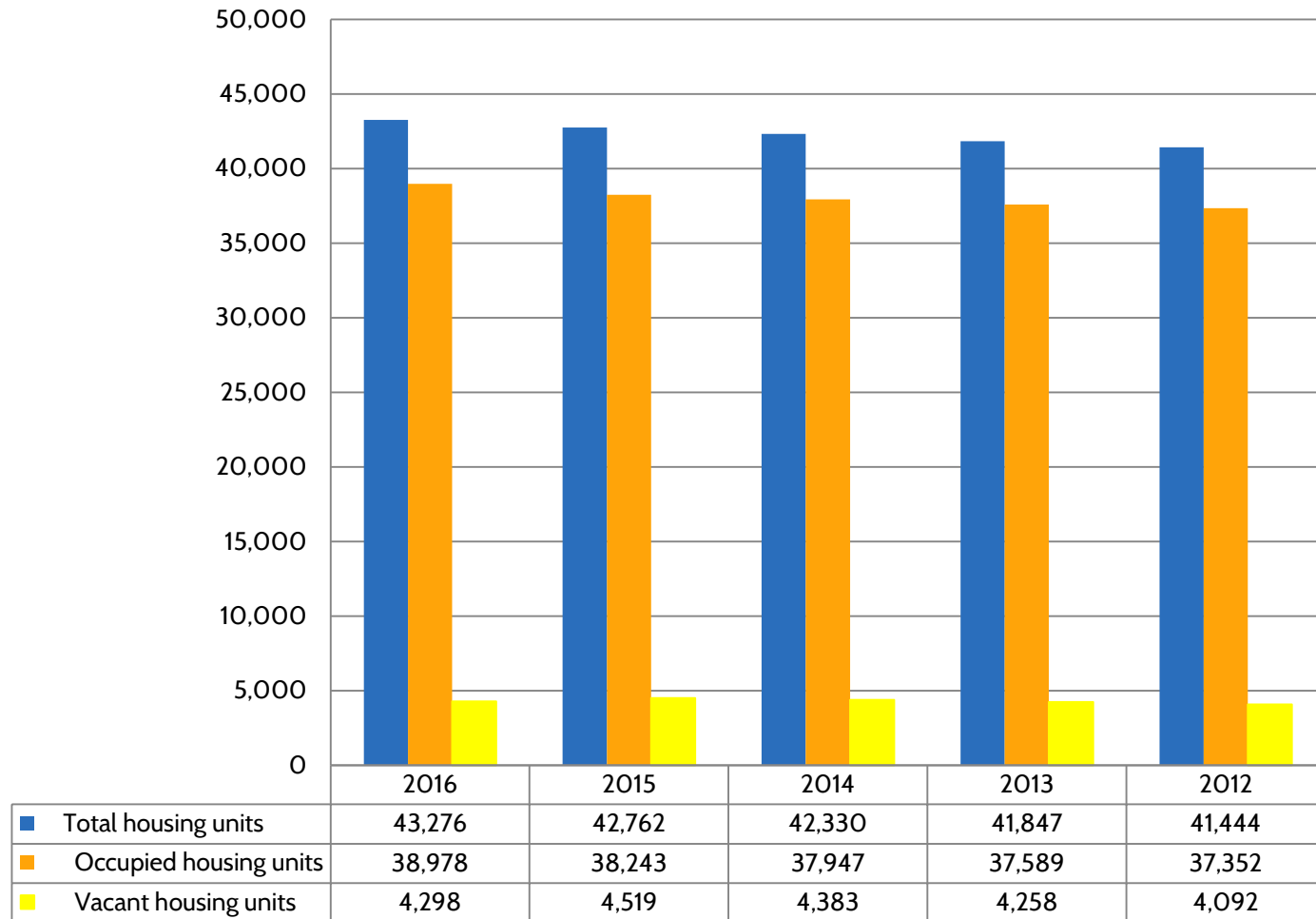
New Housing Units Authorized

Year	Single Family	Multi-Family	Total
2012	605	-	605
2013	403	2	405
2014	451	6	457
2015	626	15	641
2016	689	9	698

Home Ownership



Occupied Housing Units



Housing Price Trends

2017 Year End	Median Sold Price	Units Sold
St. Mary's County	\$274,950	1,682

2017 Year End	2017	2016	% Change
Average Sold Price	\$290,541	\$280,772	3.48%
Median Sold Price	\$274,950	\$266,178	3.30%
Total Units Sold	1,682	1,555	8.17%
Avg. Days on Market	93	101	-7.92%
Avg. List Price for Solds	\$297,065	\$286,242	3.78%
Avg. Sales Price to Original List Price Ratio	95.2%	93.6%	1.64%



Visitor Stays

Visitors (Thousands)				
Year	Overnight	Day	Total	Growth Rate
2016	426.9	430.2	857.1	9.9%
2015	378.0	401.7	779.7	15.5%
2014	331.5	343.3	674.8	2.5%
2013	315.0	343.1	658.0	0.3%
2012	315.1	340.9	656.0	3.5%

Occupancy Rate

Year	Occupancy Rate	Percent Change
2016	68.7	18.3%
2015	58.0	18.6%
2014	49.0	8.4%
2013	45.2	-8.1%

Economic Impact of Tourism

Tourism Employment			
	Direct	Total (Direct, Indirect, Induced)	Share of State (Total)
2016	1,372	2,365	1.07%
2015	1,314	2,286	1.05%
2014	1,225	2,164	1.01%
2013	1,231	2,161	1.02%
2012	1,308	2,245	1.09%

Economic Impact of Tourism

Tourism Labor Income, (millions)			
	Direct	Total (Direct, Indirect, Induced)	Share of State (Total)
2016	\$37.5	\$84.7	0.87%
2015	\$33.5	\$77.2	0.83%
2014	\$30.7	\$71.2	0.81%
2013	\$30.2	\$69.1	0.83%
2012	\$31.7	\$70.0	0.88%

Economic Impact of Tourism

Total Tourism Tax Receipts, (millions)				
	Federal	State and Local	Hotel	Total
2016	\$18.9	\$23.3	\$1.01	\$42.2
2015	\$17.4	\$21.3	\$0.85	\$38.7
2014	\$16.0	\$19.4	\$0.73	\$35.4
2013	\$15.3	\$18.6	\$0.79	\$33.9
2012	\$15.7	\$20.0	\$0.86	\$35.7

Tourism Related Sales

Tourism Industry Sales, (millions)								
Year	Lodging	Food and Beverage	Retail	Recreation	Transportation	Second Homes	Total	Growth Rate
2016	\$25.6	\$41.5	\$23.4	\$18.3	\$32.3	\$22.3	\$163.4	8.4%
2015	\$22.2	\$37.9	\$22.8	\$15.9	\$32.0	\$19.9	\$150.7	8.7%
2014	\$20.4	\$34.4	\$22.4	\$14.6	\$29.6	\$17.2	\$138.6	5.8%
2013	\$19.5	\$31.9	\$21.7	\$13.0	\$28.4	\$16.6	\$131.0	-8.6%
2012	\$21.9	\$32.2	\$23.1	\$15.4	\$30.8	\$19.9	\$143.4	3.7%

Agriculture Data

Agriculture in St. Mary's	
Farms	632
Land in Farms	67,086
Median Size of Farm	50

Farms By Size	Number
1-9 acres	62
10-49 acres	243
50-179 acres	259
180-499 acres	47
500-999 acres	13
1,000 acres or more	8

Farms By Revenue	Number
Less than \$2,500	213
\$2,500-\$4,999	60
\$5,000 - \$9,999	90
\$10,000 - \$24,999	101
\$25,000 - \$49,999	87
\$50,000 - \$99,999	39
\$100,000 or more	42



Agriculture Data

Selected Crops Harvested	Number of Farms	Inventory
Corn for Grain	174	532,563 bushels
Corn for Silage and greenchips	25	3,031 bushels
Wheat for Grain	88	390,918 bushels
Oats for Grain	21	9,043 bushels
Barley for Grain	70	142,532 bushels
Sorghum for Grain	3	3,560 bushels
Soybeans for Beans	142	541,640 bushels
Tobacco	30	400,194 pounds
Forage	243	13,042 tons
Potatoes	25	N/A
Sweet Potatoes	3	N/A
Land in Orchards	38	119

Agriculture Data

Selected Crops Harvested	Number of Farms	Inventory
Beef Cows	125	1,556
Milk Cows	49	304
Hogs and Pigs	45	854
Sheep and Lambs	52	856
Layers	129	5,882
Broilers and other meat-type	18	18,012

Daily Traffic Volume

Data for Daily Traffic Count for various road in St. Mary's County is provided by the Maryland State Highway Administration. Find the info at the following link:

<https://maryland.maps.arcgis.com/apps/webappviewer/index.html?id=223148a698214294a7b43ed612a4e67d>

Tax Rates

Tax	St. Mary's County	Maryland
Corporate Income Tax	None	8.25%
Personal Income Tax	3.00%	2.0%-5.75%
Sales & Use Tax	None	6.0%
Real Property Tax	\$0.8478	\$0.112
Business Personal Property Tax	\$2.1195	None





ECONOMIC
DEVELOPMENT